



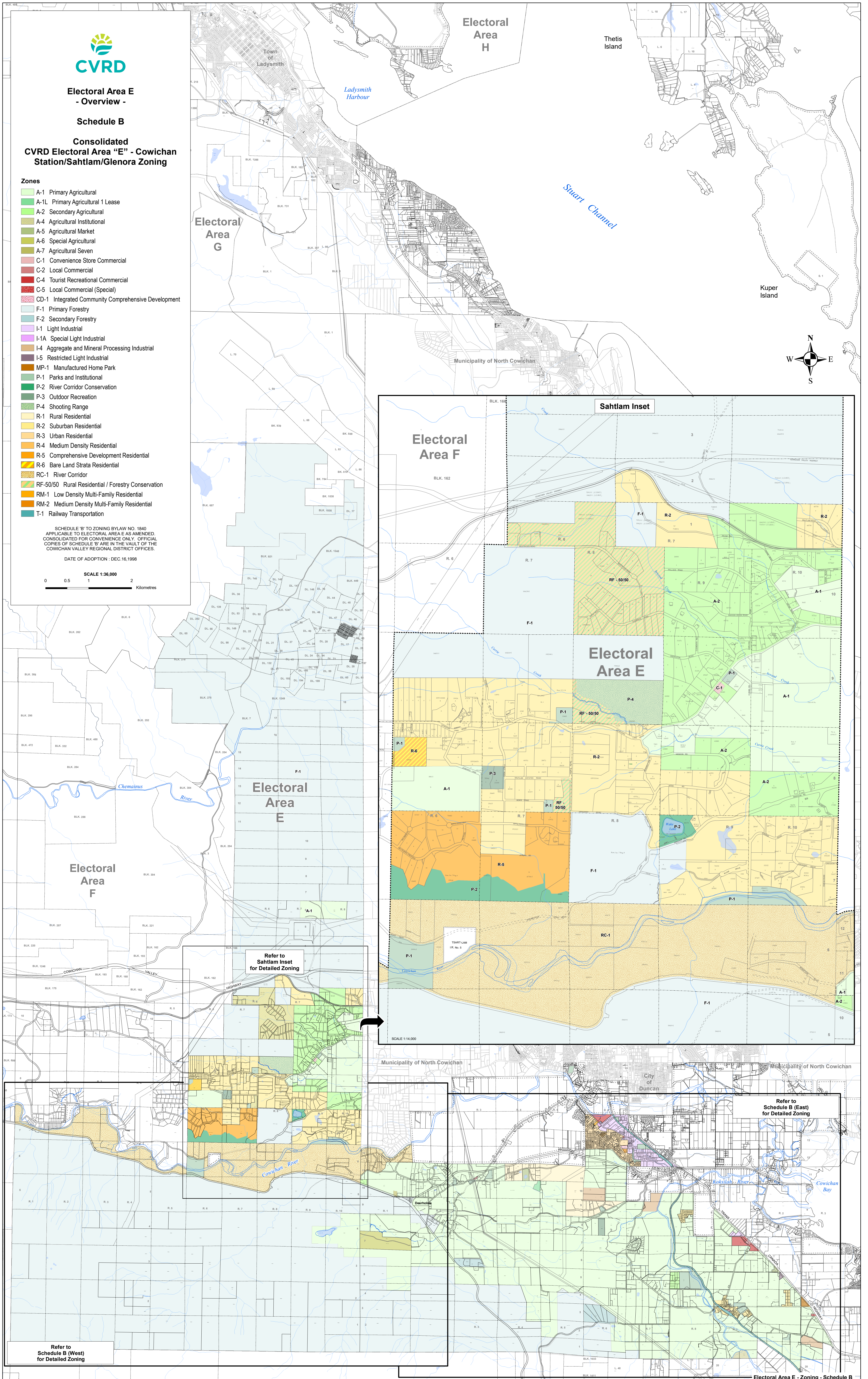
**Electoral Area E
- Overview -
Schedule B**

**Consolidated
CVRD Electoral Area "E" - Cowichan
Station/Sahtlam/Glenora Zoning**

- Zones**
- A-1 Primary Agricultural
 - A-1L Primary Agricultural 1 Lease
 - A-2 Secondary Agricultural
 - A-4 Agricultural Institutional
 - A-5 Agricultural Market
 - A-6 Special Agricultural
 - A-7 Agricultural Seven
 - C-1 Convenience Store Commercial
 - C-2 Local Commercial
 - C-4 Tourist Recreational Commercial
 - C-5 Local Commercial (Special)
 - CD-1 Integrated Community Comprehensive Development
 - F-1 Primary Forestry
 - F-2 Secondary Forestry
 - I-1 Light Industrial
 - I-1A Special Light Industrial
 - I-4 Aggregate and Mineral Processing Industrial
 - I-5 Restricted Light Industrial
 - MP-1 Manufactured Home Park
 - P-1 Parks and Institutional
 - P-2 River Corridor Conservation
 - P-3 Outdoor Recreation
 - P-4 Shooting Range
 - R-1 Rural Residential
 - R-2 Suburban Residential
 - R-3 Urban Residential
 - R-4 Medium Density Residential
 - R-5 Comprehensive Development Residential
 - R-6 Bare Land Strata Residential
 - RC-1 River Corridor
 - RF-50/50 Rural Residential / Forestry Conservation
 - RM-1 Low Density Multi-Family Residential
 - RM-2 Medium Density Multi-Family Residential
 - T-1 Railway Transportation

SCHEDULE 'B' TO ZONING BYLAW NO. 1840
APPLICABLE TO ELECTORAL AREA E AS AMENDED.
CONSOLIDATED FOR CONVENIENCE ONLY. OFFICIAL
COPIES OF SCHEDULE 'B' ARE IN THE VAULT OF THE
COWICHAN VALLEY REGIONAL DISTRICT OFFICES.
DATE OF ADOPTION - DEC. 16, 1998

SCALE 1:36,000
0 0.5 1 2
Kilometres



Refer to
Sahtlam Inset
for Detailed Zoning

Refer to
Schedule B (East)
for Detailed Zoning

Refer to
Schedule B (West)
for Detailed Zoning