

**ELECTORAL AREA B**  
**Shawnigan Lake**  
 Zoning Designations

- A-1 Primary Agricultural
- A-1A Modified Primary Agricultural
- A-2 Secondary Agricultural
- A-2A Small Lot Agricultural
- A-6 Agricultural Institutional
- F-1 Primary Forestry
- F-1A Primary Forestry - Kennel
- F-2 Secondary Forestry
- CD-1A Conservation/Eco-Forestry CD-1A Sub-Zone
- CD-1B Rural Residential CD-1B Sub-Zone
- CD-1C Rural Residential CD-1C Sub-Zone
- CD-1D Mixed Use CD-1D Sub-Zone
- CD-5 Rural Comprehensive Development 5 - Clearwater Resort
- CD-6 Rural Comprehensive Development 6 - Renfrew Road
- RR-2 Rural Residential 2
- RR-3A Rural Residential 3A
- RR-4 Rural Manufactured Home Park
- RR-5 Rural Manufactured Home Residential
- R-1 Rural Residential
- R-1A Limited Rural Residential
- R-2 Suburban Residential
- R-2A Limited Suburban Residential
- R-3 Urban Residential
- R-4 Rural Community Residential
- R-4A Village Manufactured Home Park Residential
- R-6 Urban Residential (Mobile Home)
- RM-2 Multiple Family Residential
- MP-1 Mobile Home Park
- C-1 Village Commercial
- C-2 Local Commercial
- C-2A Local Commercial
- C-2B Local Commercial
- C-2C Local Commercial
- C-3 Service Commercial
- C-4 Tourist Recreational Commercial
- C-5 Neighbourhood Pub Commercial
- C-6 Rural Farm Market Commercial
- P-1 Parks and Institutional
- P-2 Parks and Recreation
- I-1 Light Industrial
- I-1A Light Industrial
- I-1C Light Industrial
- I-1D Rural Transition Light Industrial
- I-3 Medium Industrial
- I-4 Aggregate and Mineral Processing Industrial
- I-5 Eco-Industrial
- T-1 Railway Transportation
- W-1 Water Conservancy
- W-2 Water Recreation
- W-21 Water Institutional
- W-3 Water Marina
- W-4 Freshwater Conservation 4

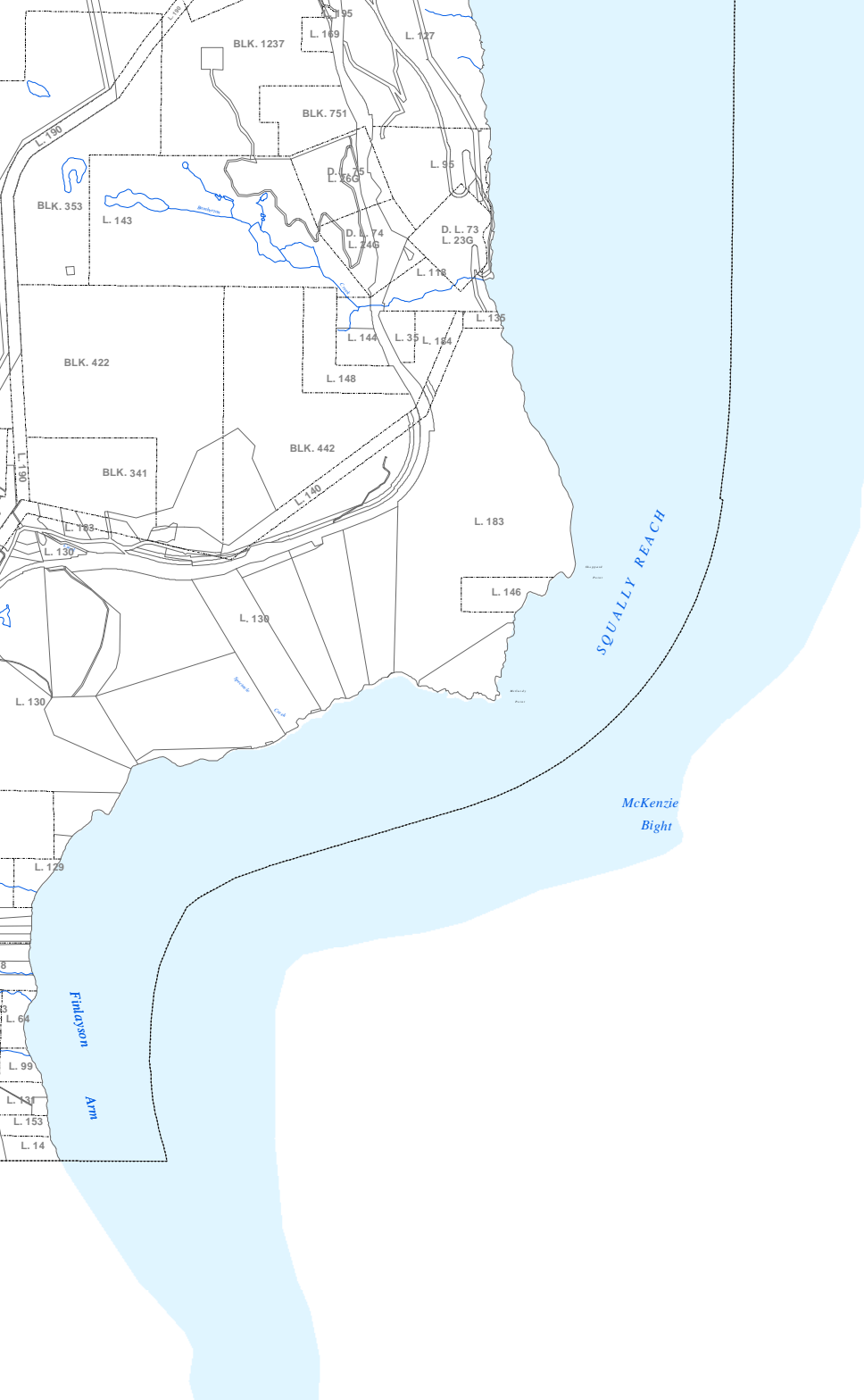
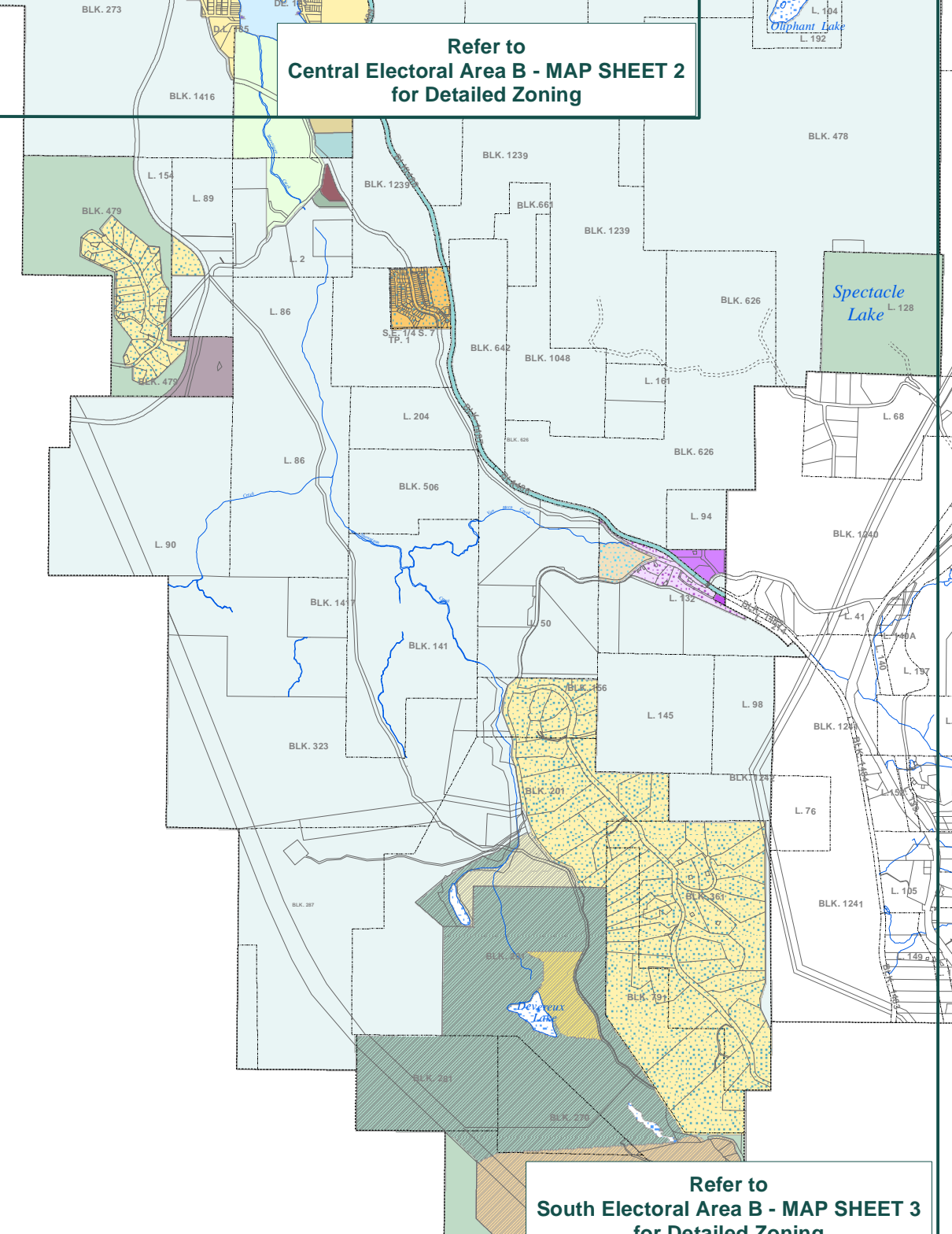
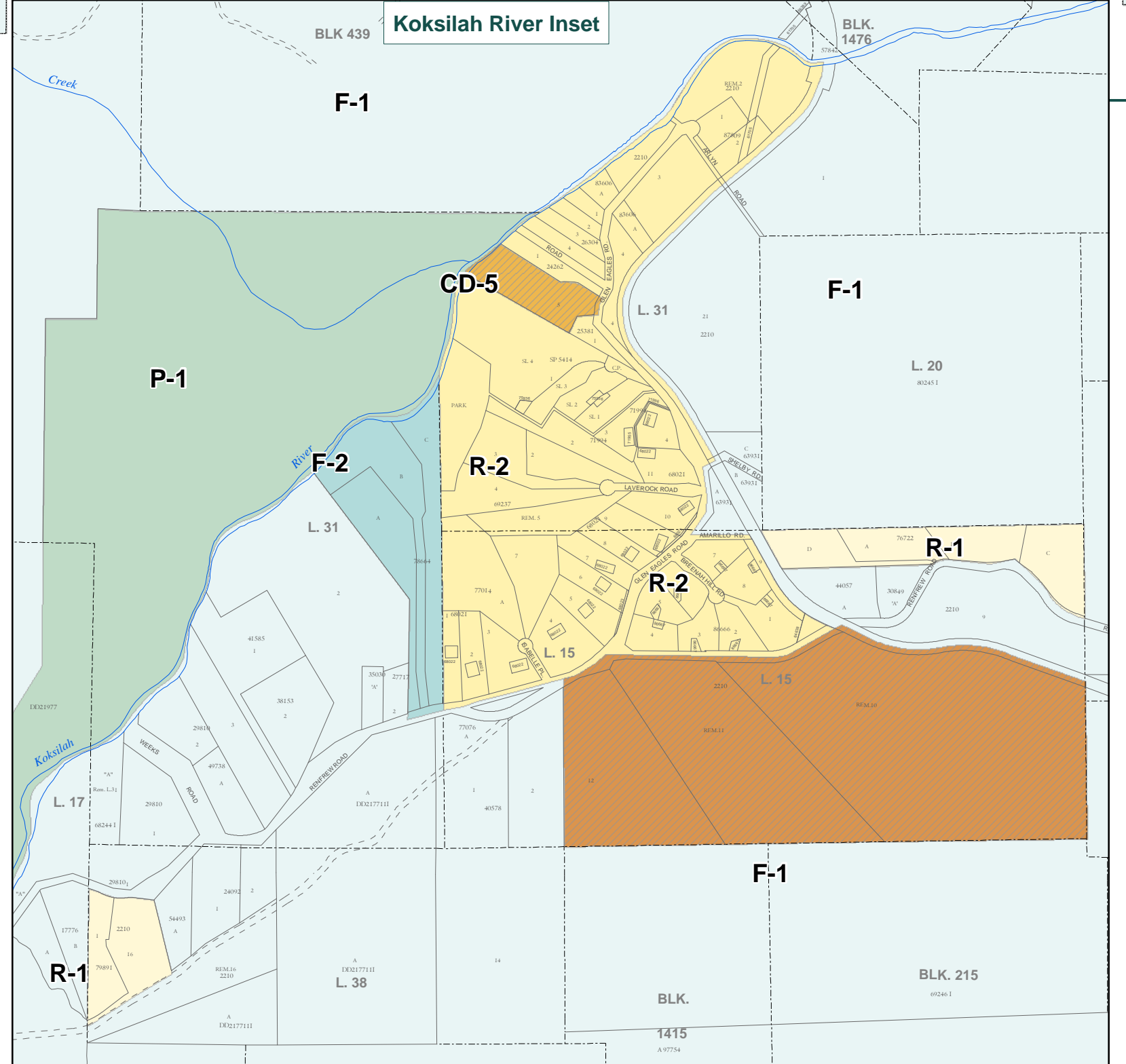
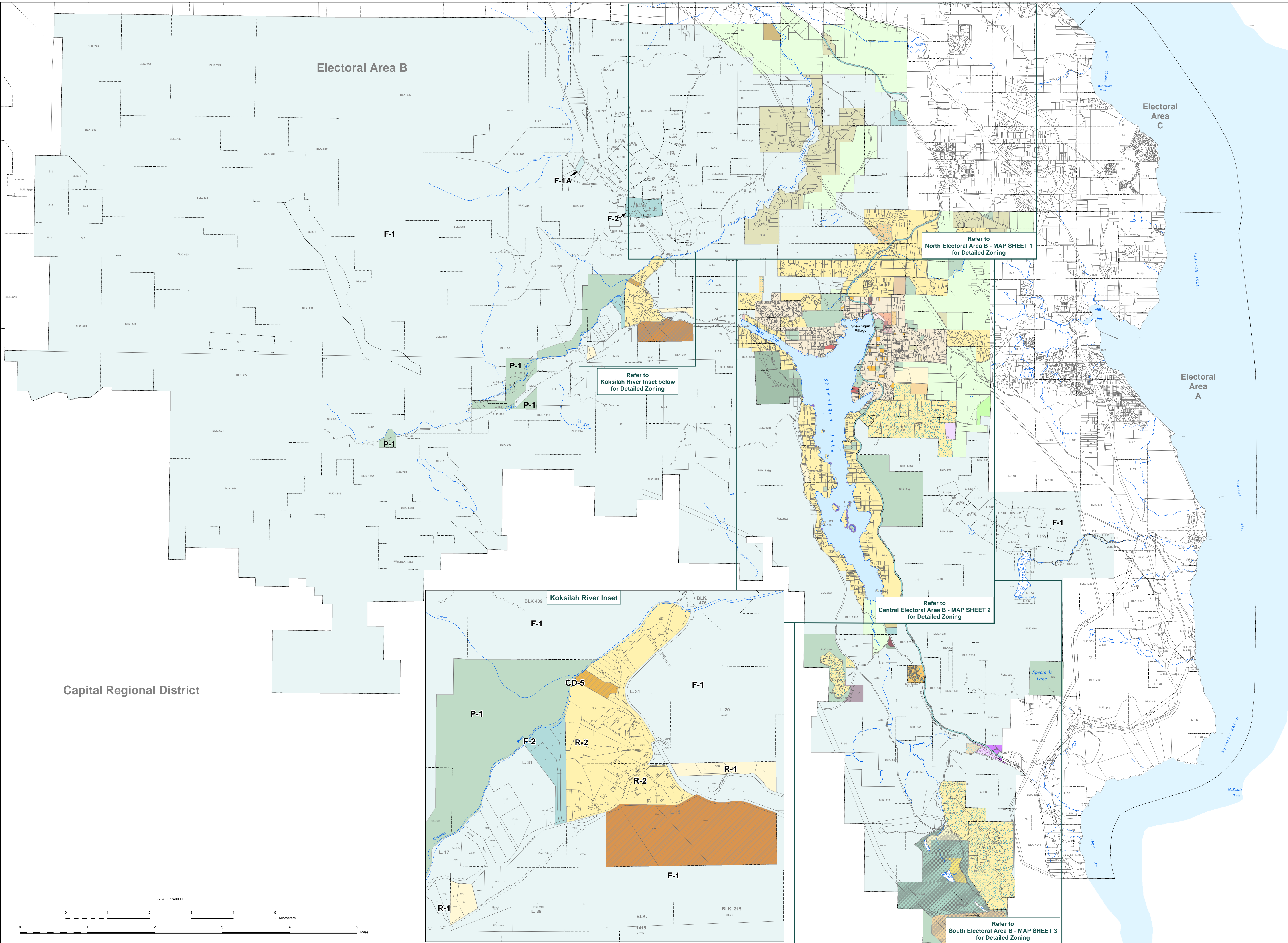
SCHEDULE 9 TO ZONING BYLAW NO. 885  
 APPLICABLE TO ELECTORAL AREA B IS AMENDED.  
 CONSULTANTS FOR CONFERENCE ONLY. OFFICIAL  
 COPIES OF SCHEDULE 9 ARE IN THE HALL OF THE  
 COWICHAN VALLEY REGIONAL DISTRICT OFFICE.  
 DATE OF ADOPTION: SEPTEMBER 16, 1998.



ZONING REVISION: SEPT 14, 2016  
 ZONING AMENDMENT BYLAW:

1040	1253	1391	1025	1076	2188	2242	2600	2946	2707	3118	3084	3359
1064	1268	1397	1642	1960	2284	2362	2451	2559	2793	3121	3274	3637
1115	1274	1481	1685	1974	2307	2368	2505	2588	2892	3232	3502	3799
1155	1284	1513	1746	1975	2317	2369	2510	2639	2954	3241	3610	3817
1177	1321	1514	1793	2025	2326	2431	2522	2660	3016	3239	3687	3848
1190	1373	1616	1847	2170	2337	2433	2533	2705	3082	3223	3756	4031

**Electoral Area B - Zoning - KEY MAP**



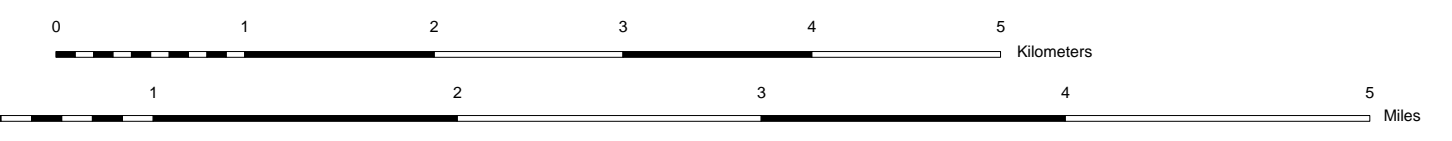
Electoral Area B

Electoral Area C

Electoral Area A

Capital Regional District

SCALE 1:40000



F-1A

F-2

P-1

P-1

P-1

F-1

CD-5

P-1

F-2

R-2

R-2

R-1

F-1

R-1

Refer to  
North Electoral Area B - MAP SHEET 1  
for Detailed Zoning

Refer to  
Koksilah River Inset below  
for Detailed Zoning

Refer to  
Central Electoral Area B - MAP SHEET 2  
for Detailed Zoning

Refer to  
South Electoral Area B - MAP SHEET 3  
for Detailed Zoning