

News Release



FOR IMMEDIATE RELEASE

February 22, 2022

Kinsol Trestle Gateway Project receives funding to create new parking area for popular regional attraction

DUNCAN, BC – The approval of a \$459,000 grant from the Province of BC will enable the Cowichan Valley Regional District (CVRD) to construct a new parking lot for public access to the historic Kinsol Trestle and Cowichan Valley Trail.

The Kinsol Trestle Gateway Project, supported by the Province of British Columbia's Community Economic Recovery Infrastructure Program, will address increasing demand for organized and safe access to the historic Kinsol Trestle, a major recreation tourism destination in the Cowichan region of Southern Vancouver Island. The project will see the existing 35-vehicle parking lot, located within a residential neighbourhood, replaced with a 100-vehicle parking lot in a central location to the community of Shawnigan Lake with direct access off Renfrew Road. This central destination access point to the regional trail and trestle also supports local businesses and the recreation-tourism industry in Shawnigan Lake, bringing visitors to Shawnigan Village on their way to the parking area and trailhead.

"The Kinsol Trestle remains the most popular attraction in our region, for residents and tourists alike, and this project will better support the increased recreational demand we have seen in recent years," said Lori Iannidinardo, Chair of the Cowichan Valley Regional District. "As a key point along the Cowichan Valley Trail, this new parking area will reduce traffic in a rural residential neighbourhood while improving capacity for people to experience this magnificent multi-use trail."

In addition to increased parking capacity for personal vehicles, the Kinsol Trestle Gateway will provide limited spots for bus and recreational vehicle parking. The site layout also includes provision for a future accessible public washroom. Once decommissioned, the existing parking lot on Glen Eagles Road will be converted to a day use area with interpretive features, complete with picnic tables, signage and naturalized landscaping.

The CVRD will be hosting a virtual community information session on Wednesday, March 2 at 6 p.m. to provide a detailed overview of the project, and address any questions from residents.

Residents can join the virtual meeting at the following link:

<https://cowichanvalleyrd.webex.com/cowichanvalleyrd/onstage/g.php?MTID=e98c42ad86fc0b3709c ce83a2f9313f04>

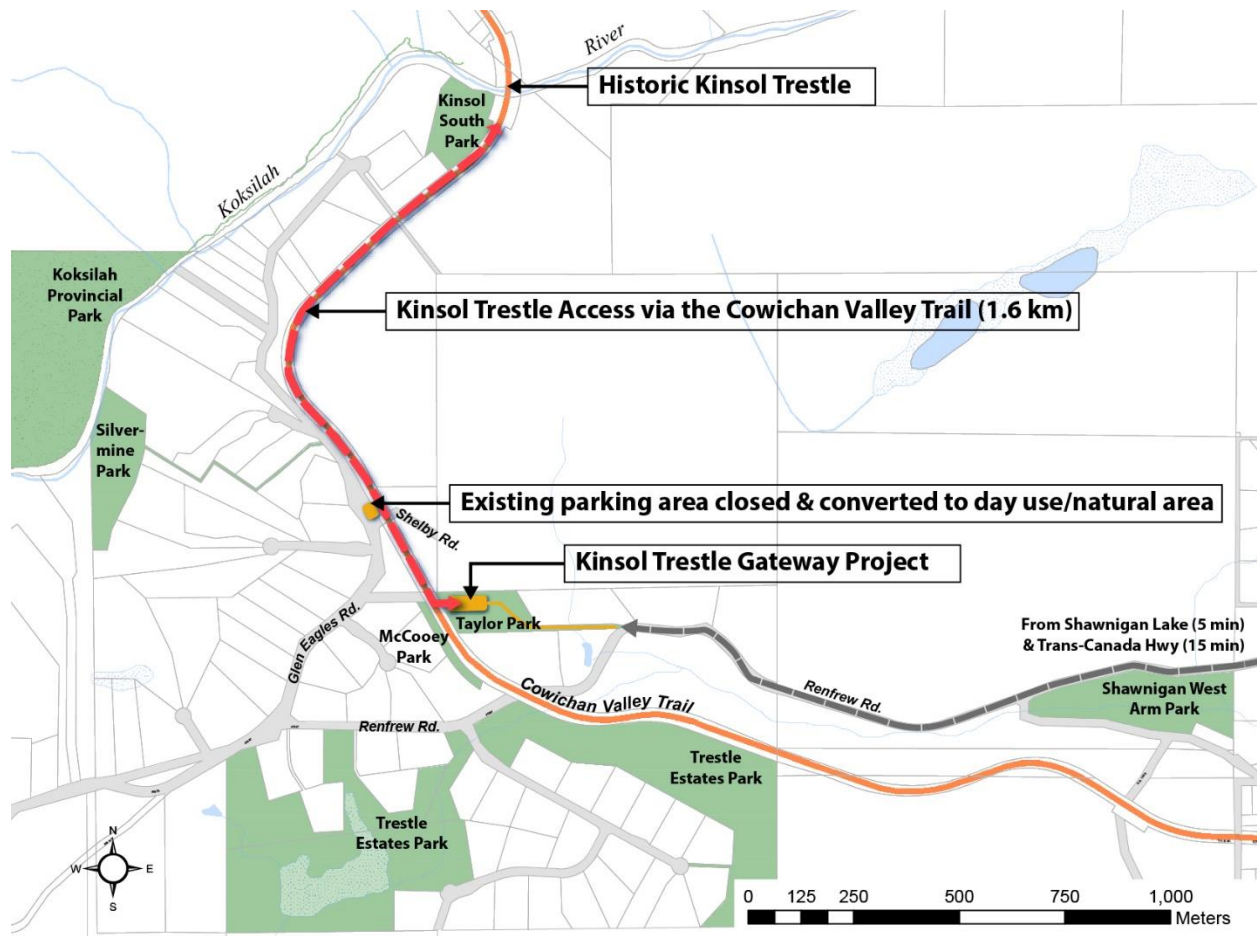
Residents can also call-in to the meeting by dialing **1-844-992-4726** and using access code **2495 059 5567**.

For more information, please contact:

Kris Schumacher
Manager, Communications & Engagement

250.701.2631

kris.schumacher@cvrd.bc.ca



Kinsol Trestle Gateway Project

